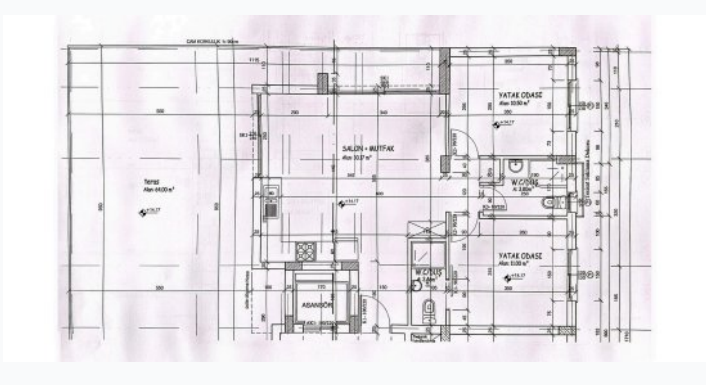


# Eurocoast Living Girne 1 residential complex

Location Kyrenia, Girne Merkez



## Complex infrastructure

- Central generator
- City center
- Hospital/Medical Center
- Hotels area
- Parking
- Security Camera System
- Shopping center/Super market

## About the project



Developer	Eurocoast Group	
Start of sale	01.01.2024	
Key handover	2025	
Houses/blocks	1	
Building floor	5 Min	5 Max
Units total	12 - 2+1	

Distance to the sea - 2000 m

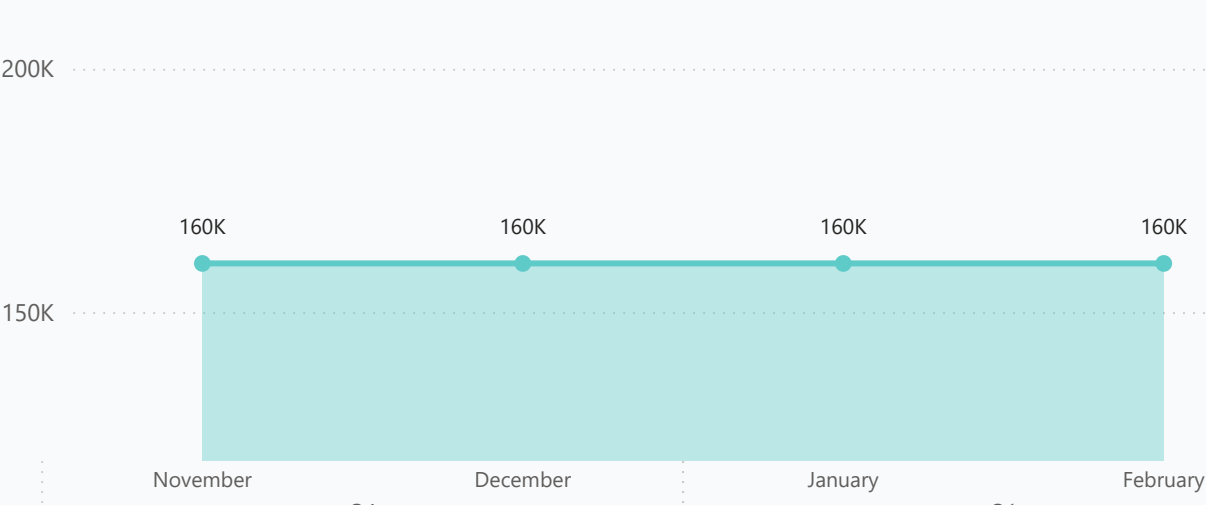
Distance to key locations:

Girne center - 450 m, hotels - 500 m, hospital - 1 km, shops - 500 m

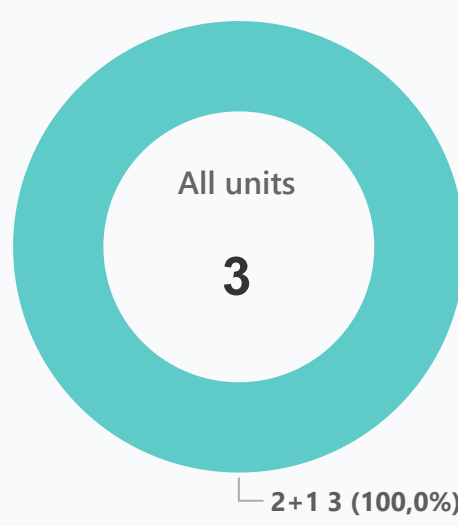
The Eurocoast Living Girne 1 building consists of 4 floors, a roof terrace and parking. 12 apartments and penthouses with 2 bedrooms and balconies with city views. The house has parking, central generator, balconies and an upstairs terrace.

## Available units 3 / 12 total

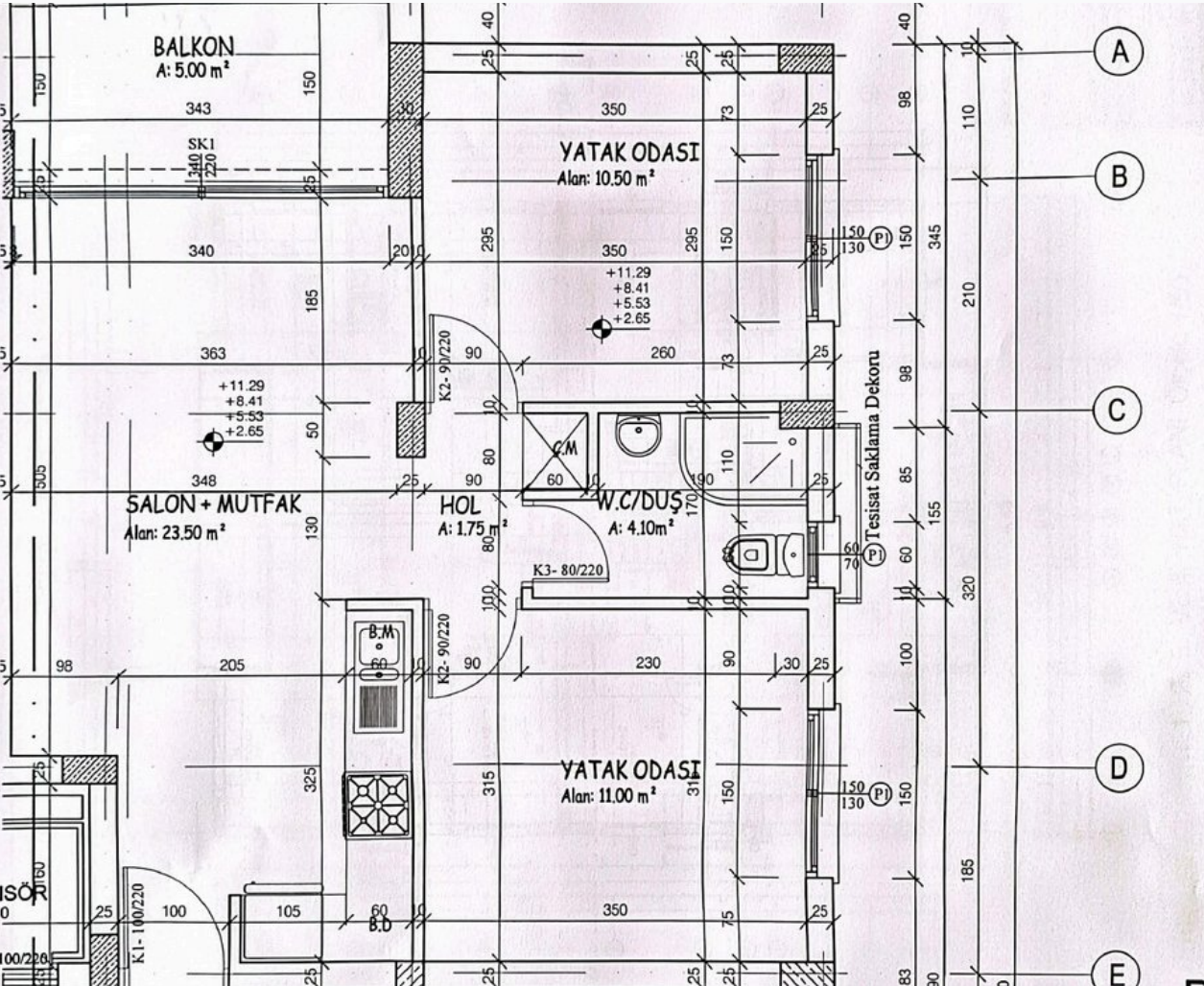
### Median price per unit, K GBP



### Structure of available units



## Plans



2+1

## Payment plans

Deposit (non-refundable) 5000-10000 GBP

<b>Option 1</b>	<b>Option 2</b>	<b>Option 3</b>	<b>Option 4</b>
<input checked="" type="radio"/> Down payment	<input checked="" type="radio"/> Down payment	<input checked="" type="radio"/> Down payment	<input checked="" type="radio"/> Down payment
35 %	0,5	100 %	-
Installments months	24	50% during con...	-
Discount	-	-	-
Offer	-	5 %	-

## Special offer

Fully furnished design package

Rental guarantee

35 %

## Details

Bedrooms	Subtype	Block	Unit №	Floor	View	Bathroom	Internal area, sq. m	Balcony/ Terrace, sq. m	Rooftop terrace, sq. m	Garden, sq. m	Gross covered area, sq. m	Current price, GBP	Price per sqm, GBP
2+1	Flat	Eurocoast Living Girne 1	15	03			65	5			70	160 000	2 286
2+1	Flat	Eurocoast Living Girne 1	13	03			65	5			70	160 000	2 286
2+1	Flat	Eurocoast Living Girne 1	14	03			65	5			70	160 000	2 286

## Interior specification



## Interior specification

- Ceramic flooring
- City center
- Hospital/Medical Center
- Hotels area
- Laminate flooring in the bedrooms
- Shopping center/Super market

## Exterior specification



## Exterior specification

- City center
- Glass fence balcony
- Hospital/Medical Center
- Hotels area
- Shopping center/Super market
- Terracing with inbuilt lighting & power sockets

## Location of complex

